

Child Protection & Safeguarding Policy

School Arrangements

Accountable Trust Committee	Local Governing Body (School Arrangements) Education (Policy Statement)
Policy Area	Education
Responsible Officer	Education Director, AKR
Status	Trust Template Proposed
Policy Rationale	Statutory
Categorisation	School-Mandatory
Implementation Date	1 st September 2021
Publication	School Website
Review Cycle	Annually
Next Review Date	Autumn 2022
Related Documents	
<i>Trust/school-mandatory policies</i>	Allegations of Abuse against Staff Policy Attendance (Pupils) Policy Behaviour-School Policy Arrangements Child Protection & Safeguarding Policy Statement Complaints Policy Curriculum Policy Statement Equality Objectives Statement E-Safety Policy-School Health & Safety Policy Modern Slavery Statement Recruitment & Retention Policy Sex & Relationships Education Policy Staff Code of Conduct Whistle-blowing Policy PSHE & Citizenship Teaching and Learning
<i>External</i>	Surrey Safeguarding Children Partnership protocols, guidance and procedures Working Together to Safeguard Children 2018 Keeping Children Safe in Education 2021 (KCSIE) Disqualification under the Childcare Act 2006 (updated 2019) FGM Act 2003 Mandatory Reporting Guidance 2016 'What to do if you are worried a child is being abused' 2015 Teacher Standards 2011 Information Sharing Advice for Practitioners' guidance 2018 SCC Children Missing Education

[SCC Touch and the use of physical intervention when working with children and young people
The Equality Act 2010
https://www.gov.uk/government/publications/covid-19-safeguarding-in-schools-colleges-and-other-providers/coronavirus-covid-19-safeguarding-in-schools-colleges-and-other-providers](https://www.gov.uk/government/publications/covid-19-safeguarding-in-schools-colleges-and-other-providers/coronavirus-covid-19-safeguarding-in-schools-colleges-and-other-providers)

Document Control

Date	Version	Comments															
08/06/21	Template																
18/06/21	0.1 TEMPLATE	This policy is based on Surrey County Council's 2020-21 model safeguarding policy. 1. This policy has not been revised in light of any possible statutory changes from September 2021 onwards. 2. In addition, we also await feedback following the external safeguarding reviews of all schools to inform policy revisions. To date feedback received suggests that the trust 'Produces or adopts a Safeguarding Policy specific for secondary and further education students rather than implementing a one size fits all approach as this contradicts statutory guidance.															
23/06/21	0.2 TEMPLATE	Consistency checks and template formatting <table border="1"> <thead> <tr> <th>Type</th> <th>Section</th> <th>Change</th> </tr> </thead> <tbody> <tr> <td>Amend</td> <td>Contacts</td> <td>Contacts moved to front of document</td> </tr> <tr> <td>Amend</td> <td>Cover</td> <td>Related documents and policies (from back) combined; trust policies versus optional school policies highlighted</td> </tr> <tr> <td>Amend</td> <td>Contents</td> <td>Numerical order to policy document and table of contents</td> </tr> <tr> <td>Amend</td> <td>All</td> <td>References to school/governors/trust revised</td> </tr> </tbody> </table>	Type	Section	Change	Amend	Contacts	Contacts moved to front of document	Amend	Cover	Related documents and policies (from back) combined; trust policies versus optional school policies highlighted	Amend	Contents	Numerical order to policy document and table of contents	Amend	All	References to school/governors/trust revised
Type	Section	Change															
Amend	Contacts	Contacts moved to front of document															
Amend	Cover	Related documents and policies (from back) combined; trust policies versus optional school policies highlighted															
Amend	Contents	Numerical order to policy document and table of contents															
Amend	All	References to school/governors/trust revised															
28/06/21	0.3 TEMPLATE	Publish to Focus Group															
14/09/21	0.4 TEMPLATE	Changes to reflect KSCIE 2021 and related SCC policy 2021-22															
21/09/21	0.5 TEMPLATE	Reflection of policy status: school arrangements with overarching safeguarding policy statement by trust.															
22/09/21	1.0 TEMPLATE	<p>Template ready for issue to schools.</p> <p>This document is a template to be adapted, approved and implemented at school level. The Director of Education will be able to offer advice and support to schools in adapting this template to local needs.</p> <p>The template is based on Surrey County Council model, as adapted by the trust.</p> <p>Key</p> <ul style="list-style-type: none"> • Green: Key changes to the SCC document • Yellow: Requires action by each school • Blue: trust specific changes <p>Instructions for Schools:</p> <ol style="list-style-type: none"> 1. Insert Logo and Name of School. 2. Replace name of school in Introduction 3. Update yellow highlighted text as appropriate; remove all highlighting 4. Submit to your Local Governing Body for LGB approval. 5. Remove watermark, document control items (herein) prior to being published and update status on first page as 'Approved – DD-MMM-YY' 6. Save the file as pdf and publish the pdf on school website 															

Contents

1	Policy Statement	6
2	Terminology	6
3	Introduction	7
4	Policy Principles & Values	7
5	Policy Aims.....	7
6	Supporting Children.....	8
7	Prevention / Protection	8
8	Safe School, Safe Staff	9
9	Roles and Responsibilities	10
9.1	All School Staff	10
9.2	The Principal	11
9.3	The Designated Safeguarding Lead and any Deputy	12
a)	The Designated Safeguarding Lead	12
b)	The Deputy Designated Safeguarding Lead(s):	15
9.4	The School Governing Body	15
9.5	Further roles and responsibilities	16
10	Confidentiality, Sharing and Withholding Information.....	16
11	Child Protection Procedures.....	16
12	Child Protection Procedures Flowchart.....	19
13	Dealing with disclosures	20
13.1	All staff	20
13.2	Guiding principles, the seven R's	20
c)	Receive	20
d)	Reassure	20
e)	Respond	20
f)	Report	20
g)	Record	21
h)	Remember	21
i)	Review (led by DSL)	21
13.3	What happens next?	21
13.4	Safeguarding concerns and allegations against adults who work with children	21
14	What is child abuse?	22
14.1	What is abuse and neglect?	22
a)	Physical abuse	22
b)	Emotional abuse	23
c)	Sexual abuse	23
d)	Neglect	23
15	Indicators of abuse	24
15.1	Neglect	24
a)	The nature of neglect	24
b)	Indicators of neglect	24
15.2	Emotional abuse	25
a)	The nature of emotional abuse	25
b)	Indicators of emotional abuse	25
15.3	Physical abuse	26
a)	The nature of physical abuse	26
15.4	Sexual Abuse	27
a)	The nature of sexual abuse	27
b)	Indicators of sexual abuse	28
16	Sexual violence and sexual harassment between children in schools	28
16.1	Peer on Peer/Child on Child Abuse – Policy Framework	28
16.2	Context	29
16.3	Policy	29

16.4	Prevention	29
16.5	Risk Assessment	30
16.6	Action	30
16.7	Options	30
16.8	Ongoing Response	30
16.9	Physical Abuse	31
16.10	Harmful Sexual Behaviour	31
a)	Notes on the Tool	32
a)	Brook sexual behaviours traffic light tool	33
17	Anti-Bullying/Cyberbullying	35
18	Online Safety	36
19	Racist Incidents	36
20	Radicalisation, Extremism and Terrorism	36
20.1	Indicators of vulnerability to radicalisation	37
21	Domestic Abuse	38
22	Child Sexual Exploitation (CSE)	39
22.1	Child Criminal Exploitation, Child Slavery & Gangs	40
23	Youth produced sexual imagery (sexting)	41
24	Female Genital Mutilation (FGM)	42
25	Forced Marriage	43
26	Honour-based Abuse	43
27	One Chance Rule	44
28	Private Fostering Arrangements	44
29	Children Looked After	44
30	Children Missing Education	45
31	Pupils Missing Out on Education	46
32	School Attendance and Behaviour	46
33	Restrictive Physical Intervention	46
34	Whistle-blowing	47
35	Response to COVID-19	47
35.1	Designated Safeguarding Lead	48
35.2	Children and online safety away from school	48
35.3	Supporting children not in school	48
35.4	Attendance	49

Key Contacts

Trust	01483-888188
CEO	JMayhew@athenaschools.co.uk/JMayhew@gepacademies.com
Chair of Trustees	FergalRochetru trustee@gepacademies.com
School	01483 458956
Designated Safeguarding Lead (DSL)	a.wallis@kingscollegeguildford.com
Deputy DSL(s)	j.hamilton@kingscollegeguildford.com
Nominated child protection governor	tws@rgsg.co.uk
School online Safety Co-ordinator	a.wallis@kingscollegeguildford.com
Virtual School Head Lead	m.robberts@kingscollegeguildford.com
Headteacher	a.mckenzie@kingscollegeguildford.com
Chair of Governors	michell.education@btinternet.com
Surrey County Council	
Local Authority Designated Officer (LADO)	0300123 1650 option 3 LADO
Education Safeguarding Team	LADO@surreycc.gov.uk education.safeguarding@surreycc.gov.uk https://www.surreycc.gov.uk/schools-and-learning/teachers-and-education-staff/educational-advice-and-support/safeguarding
Children's Single Point of Access (C-SPA)	0300 470 9100 cspa@surreycc.gov.uk – send via secure email
Prevent	preventreferrals@surrey.pnn.police.uk . 01483 632982 Prevent Supervisor for Surrey Police (020 7340 7264).DfE dedicated Prevent line
NSPCC	http://www.nspcc.org.uk/
ChildLine	http://www.childline.org.uk/pages/home.aspx
CEOP Thinkuknow	https://www.thinkuknow.co.uk/
Anti-Bullying Alliance	http://anti-bullyingalliance.org.uk/
Childnet International	Includes resources for professionals and parents http://www.childnet.com/
Safer Internet Centre	http://www.saferinternet.org.uk/
Contextual Safeguarding Network	https://www.contextualsafeguarding.org.uk/

Please note this list may be updated by the responsible officer when change arises in the organisation, without the need for committee meeting review/approval.

1 Policy Statement

“It could happen here”

At Athena-GEP (“the trust”), we recognise our moral and statutory responsibility to safeguard and promote the welfare of all children.

We make every effort to provide an environment in which children and adults feel safe, secure, valued and respected, and feel confident to talk if they are worried, believing they will be effectively listened to.

The trust has set a Child Protection and Safeguarding Policy Statement that applies to all schools. This outlines the trust’s aims in respect of child protection and safeguarding and sets roles and responsibilities. The policy requires schools to define and implement their own Child Protection and Safeguarding policy arrangements, using the trust policy template, that are appropriate for the local school context. The purpose of this policy set is to provide staff, volunteers, trustees and governors with the framework they need in order to keep children safe and secure in our school. This policy set also informs parents and carers how we will safeguard their children whilst they are in our care.

2 Terminology

Safeguarding and promoting the welfare of children is defined as:

- protecting children from maltreatment;
- preventing impairment of children's health or development;
- ensuring that children grow up in circumstances consistent with the provision of safe and effective care;
- taking action to enable all children to have the best outcomes.
- preventing impairment of children’s mental or physical health or development.

Child Protection is a part of safeguarding and promoting welfare. It refers to the activity that is undertaken to protect specific children who are suffering, or are likely to suffer, significant harm.

Early Help means providing support as soon as any needs emerge or are identified at any point in a child’s life.

Staff refers to all those working for or on behalf of the school, full or part time, temporary or permanent, in either a paid or voluntary capacity.

Child(ren) includes everyone under the age of 18. On the whole, this will apply to pupils of our school; however the policy will extend to visiting children and students from other establishments

Parents refers to birth parents and other adults who are in a parenting role, for example step-parents, foster carers and adoptive parents.

Social Care refers to Children’s Services in the area in which the child is resident, unless a child is a Child Looked After then this will be the Children’s Services in their home authority.

MAP refers to the Surrey Multi-Agency Partnership.

C-SPA refers to the Children’s Single Point of Access and the Child Protection Consultation Line.

3 Introduction

The governing body of Kings College Guildford is committed to the welfare of all children.

This policy has been developed in accordance with the principles established by the Children Acts 1989 and 2004; the Education Act 2002, and in line with statutory guidance: 'Working Together to Safeguard Children' 2018, Revised Safeguarding Statutory Guidance 'Framework for the Assessment of Children in Need and their Families' 2000, 'What to do if You are Worried a Child is Being Abused' 2015.

The policy also reflects, both statutory guidance 'Keeping Children Safe in Education' 2021 (KCSIE), and [Surrey Safeguarding Children Partnership \(SSCP\) Procedures](#).

Trustees and governors take seriously their responsibilities under section 175/157 of the Education Act 2002 to safeguard and promote the welfare of children; and to work together with other agencies to ensure there are robust arrangements within our school to identify, assess, and support those children who are suffering harm or at risk of suffering harm.

This policy applies to all members of staff and governors in the school.

Please see the front page for guidance and documents referred to in this policy.

4 Policy Principles & Values

- The welfare of the child is paramount
- Maintain an attitude of "It could happen here"
- Children have a right to feel safe and secure, they cannot learn effectively unless they do so.
- All children have a right to be protected from harm and abuse.
- All staff, governors and visitors have a role in the prevention of harm and abuse and an equal responsibility to act immediately on any suspicion or disclosure that may indicate a child is at risk of harm, either in the school or in the community, taking into account contextual safeguarding, in accordance with statutory guidance.
- We acknowledge that working in partnership with other agencies protects children and reduces risk and so we will engage in partnership working to protect and safeguard children.
- Whilst the school will work openly with parents as far as possible, it reserves the right to contact Social Care or the police, without notifying parents if this is believed to be in the child's best interests.

5 Policy Aims

- To demonstrate the school's commitment with regard to safeguarding and child protection to all pupils, all staff, all governors, all parents and other partners.
- To raise the awareness of all teaching and non-teaching staff of their responsibilities to safeguard children through identifying and reporting possible cases of abuse.
- To enable the school to effectively contribute to Early Help, assessments of need and support for those children.
- To provide robust school systems and procedures that are followed by all members of the school community in cases of suspected abuse.
- To develop and promote effective working relationships with other agencies, in particular Early Help providers, the Police, Health and Social Care.

- To ensure that all staff working within our school who have substantial access to children have been checked as to their suitability, including verification of their identity, qualifications, and a satisfactory DBS check (according to KCSIE guidance), and a single central record is kept for audit.
- To comply with the [Disqualification under the Childcare Act 2006](#) guidance issued in August 2018.

6 Supporting Children

We recognise that school may provide a safe place and the only stability in the lives of children who have been abused or who are at risk of harm.

We recognise that a child who is abused or witnesses abuse and/or violence may feel helpless and humiliated, may blame themselves, and find it difficult to develop and maintain a sense of self-worth.

We accept that research shows that the behaviour of a child in these circumstances may range from that which is perceived to be normal to aggressive or withdrawn.

Our school will support all children:

- We will promote a caring, safe and positive environment within the school.
- We will encourage self-esteem and self-assertiveness, through the curriculum and through positive relationships within the school community.
- We will ensure children are taught to understand and manage risk through personal, social, health and economic (PSHE) education and Relationship and Sex Education (RSE) and through all aspects of school life. This includes online safety – see E-Safety Policy.
- We will respond sympathetically to any requests for time out to deal with distress and anxiety.
- We will offer details of helplines, counselling or other avenues of external support.
- We will liaise and work in partnership with other support services and agencies involved in Early Help and the safeguarding of children.
- We will notify Social Care immediately if there is a significant concern.
- We will provide continuing support to a child about whom there have been concerns who leaves the school by ensuring that information is shared under confidential cover to the child's new setting and ensure the school records are forwarded as a matter of priority and within statutory timescales.

7 Prevention / Protection

We recognise that the school plays a significant part in the prevention of harm to our children by providing children with good lines of communication with trusted adults, supportive friends and an ethos of protection.

The school will:

- Establish and maintain an ethos where children feel safe and secure, are encouraged to talk and are always listened to.
- Include regular consultation with children e.g. through questionnaires and participation in student voice events.
- Ensure that all children know there is and can access an adult in the school whom they can approach if they are worried or in difficulty.

- Include safeguarding across the curriculum, including PSHE, opportunities which equip children with the skills they need to stay safe from harm and to know to whom they should turn for help. In particular this will include anti-bullying work, online-safety, road safety, and healthy relationships work.
- Ensure all staff are aware of school guidance for their use of mobile technology and have discussed safeguarding issues around the use of mobile technologies and their associated risks.

8 Safe School, Safe Staff

We will ensure that:

- The school operates a safer recruitment procedure that includes statutory checks on staff suitability to work with children.
- All staff receive information about the school's safeguarding arrangements, the school's safeguarding statement, staff behaviour policy (code of conduct), child protection policy, the role and names of the Designated Safeguarding Lead and their deputy(ies), and Keeping Children Safe in Education part 1 and annex A.
- All staff receive safeguarding and child protection training at induction in line with advice from [Surrey Safeguarding Children Partnership](#) which is regularly updated and receive safeguarding and child protection updates (for example, via email, e-bulletins and staff meetings), as required, but at least annually.
- All members of staff are trained in and receive regular updates in online safety and reporting concerns.
- All members of staff maintain a zero-tolerance approach to sexual violence and sexual harassment.
- All staff and governors have regular child protection awareness training, updated by the DSL as appropriate, to maintain their understanding of the signs and indicators of abuse.
- The child protection policy is made available via the school website and that parents/carers are made aware of this policy.
- All parents/carers are made aware of the responsibilities of staff members with regard to child protection procedures through the publication of the Child Protection Policy.
- We provide a coordinated offer of Early Help when additional needs of children are identified and contribute to early help arrangements and inter-agency working and plans.
- Our lettings policy will seek to ensure the suitability of adults working with children on school sites at any time and ensure that any groups who use the school premises have child protection policies and procedures in place.
- Community users organising activities for children are aware of the school's Child Protection Policy, guidelines and procedures.
- The name of the designated members of staff for child protection, the Designated Safeguarding Lead and deputy(ies), are clearly advertised in the school with a statement explaining the school's role in referring and monitoring cases of suspected harm and abuse.
- All staff will be given a copy of Part 1 and Annex A of Keeping Children Safe in Education 2020 and will sign to say they have read and understood it. This applies to the Governing Body in relation to part 2 of the same guidance.

9 Roles and Responsibilities

9.1 All School Staff

All staff have a key role to play in identifying concerns early and in providing help for children. To achieve this they will:

- Provide a safe environment in which children can learn.
- Establish and maintain an environment where children feel secure, are encouraged to talk and are listened to.
- Ensure children know that there are adults in the school who they can approach if they are worried or have concerns.
- Ensure all staff are aware that mental health problems can, in some cases, be an indicator that a child has suffered or is at risk of suffering abuse, neglect or exploitation.
 - Only appropriately trained professionals will attempt to make a diagnosis of a mental health problem.
 - Staff however, are well placed to observe children day-to-day and identify those whose behaviour suggests that they may be experiencing a mental health problem or be at risk of developing one.
 - Where children have suffered abuse and neglect, or other potentially traumatic adverse childhood experiences, this can have a lasting impact throughout childhood, adolescence and into adulthood. Staff are aware of how these children's experiences can impact on their mental health, behaviour and education.
 - If staff have a mental health concern about a child that is also a safeguarding concern, immediate action will be taken, following our child protection policy and procedure and speaking to the designated safeguarding lead or a deputy.
- Take immediate action if they have a mental health concern about a child that is also a safeguarding concern, following our Child Protection Policy and procedures.
- Plan opportunities within the curriculum for children to develop the skills they need to assess and manage risk appropriately and keep themselves safe.
- Attend training in order to be aware of and alert to the signs of abuse.
- Maintain an attitude of "it could happen here" with regards to safeguarding.
- Understand that safeguarding is "everyone's responsibility".
- Know how to respond to a pupil who discloses harm or abuse following training of 'Working together to Safeguard Children', and 'What to do if you are worried a child is being Abused' (2015).
- Record their concerns if they are worried that a child is being abused and report these to the DSL immediately that day. If the DSL is not contactable immediately a Deputy DSL should be informed.
- Be prepared to refer directly to the Multi Agency Partnership (MAP), and the police if appropriate. We understand that we have a pivotal role to play in multi-agency safeguarding arrangements. All staff and governors ensure that the school contributes to multi-agency working in line with statutory guidance Working Together to Safeguard Children, if there is a risk of significant harm and the DSL or their Deputy is not available.
- Follow the allegations procedures if the disclosure is an allegation against a member of staff.
- Report low-level concerns (as defined in KCSIE 2021) about any member of staff/supply staff or contractor to the DSL (or deputy) and where a low-level concern is raised about the DSL it will be shared with the Principal.
- Follow the procedures set out by the Surrey Safeguarding Children Partnership and take account of guidance issued by the Department for Education.

- Provide support for children subject to Early Help, Child in Need or Child Protection that is in keeping with their plan.
- Treat information with confidentiality but never promising to “keep a secret”.
- Notify the DSL or their Deputy of any child on a child protection plan or child in need plan who has unexplained absence.
- Have an understanding of early help and be prepared to identify and support children who may benefit from early help.
- Will identify children who may benefit from early help, liaising with the DSL in the first instance. In some circumstances it may be appropriate for a member of school staff to act as the lead professional in early help cases.
- Liaise with other agencies that support pupils and provide early help.
- Know who the DSL and Deputy DSL are and know how to contact them.
- Have an awareness of the role of the DSL, the school’s Child Protection Policy, Behaviour Policy and Staff Code of Conduct, and procedures relating to the safeguarding response for children who go missing from education.
- Be mindful that the Teacher Standards states that teachers should safeguard children’s wellbeing and maintain public trust in the teaching profession as part of their professional duties.
- Assist the Governing Body and Principal in fulfilling their safeguarding responsibilities set out in legislation and statutory guidance.

9.2 The Principal

In addition to the role and responsibilities of all staff, the Principal will ensure that:

- Their school has a school-adapted Child Protection & Safeguarding School Policy Arrangements document in place, based on the preferred template provided by the Education Director at the time, and signed off by the governing body.
- The school fully contributes to inter-agency working in line with Working Together to Safeguard Children 2018 guidance.
- The Child Protection and Safeguarding Policy and procedures are implemented and followed by all staff.
- That the school has appropriate policies in place that make it clear that sexual harassment, online sexual abuse and sexual violence (including sexualised language) is unacceptable, with appropriate sanctions and support in place.
- That the school’s staff have appropriate knowledge of part 5 the government’s ‘Keeping children safe in education’ guidance.
- That all children are supported to report concerns about harmful sexual behaviour freely. That concerns are taken seriously and dealt with swiftly and appropriately, and children are confident that this is case, and that comprehensive records of all allegations are kept.
- All staff are aware of the role of the designated safeguarding lead (DSL), including the identity of the DSL and any deputies.
- Sufficient time, training, support, funding, resources, including cover arrangements where necessary, is allocated to the DSL to carry out their role effectively, including the provision of advice and support to school staff on child welfare and child protection matters, to take part in strategy discussions/meetings and other inter-agency meetings and/or support other staff to do so; and to contribute to the assessment of children.
- Opportunities are provided for a co-ordinated offer of early help when additional needs of children are identified.
- Deputy DSLs are trained to the same standard as the DSL and the role is explicit in their job description.
- Adequate and appropriate DSL cover arrangements are in place for any out of hours/out of term activities.

- Where there is a safeguarding concern that the child's wishes and feelings are taken into account when determining what action to take and what services to provide.
- Child-centred systems and processes are in place for children to express their views and give feedback.
- All staff feel able to raise concerns about poor or unsafe practice and that such concerns are handled sensitively and in accordance with the whistle-blowing procedures.
- Pupils are provided with opportunities throughout the curriculum to learn about safeguarding, including keeping themselves safe online.
- Allegations or concerns against staff are dealt with in accordance with guidance from the Department for Education (DfE), Surrey Safeguarding Children Partnership (SSCP) and Surrey County Council (SCC).
- Statutory requirements are met to make a referral to the Disclosure and Barring Service and additionally in the case of teaching staff the Teacher Regulation Agency where they think an individual has engaged in conduct that harmed (or is likely to harm) a child; or if the person otherwise poses a risk of harm to a child.

9.3 The Designated Safeguarding Lead and any Deputy

A member of the senior leadership team has been appointed by the Governing Body as the Designated Safeguarding Lead (DSL) who will take lead responsibility for safeguarding and child protection and that the role is explicit in the role holder's job description.

On appointment, the DSL and any deputies undertake interagency training (SSCP Foundation Modules 1&2) and also undertake DSL 'New to Role' and 'Update' training every two years as well as attending DSL network events, to refresh knowledge and skills.

The designated safeguarding lead and any deputies will liaise with the three safeguarding partners and work with other agencies in line with Working Together to Safeguard Children. NSPCC- When to call the police should help designated safeguarding leads understand when they should consider calling the police and what to expect when they do.

a) The Designated Safeguarding Lead

In addition to the role and responsibilities of all staff the DSL will:

- Hold the lead responsibility for safeguarding and child protection (including online safety) in the school, this responsibility is not able to be delegated.
- Have an "it could happen here" approach to safeguarding.
- Liaise with the local authority and work in partnership with other agencies in line with Working Together to Safeguard Children.
- Manage and submit a Request for Support Form for a child if there are concerns about suspected harm or abuse, to the Children's Single Point of Access (C-SPA), and act as a point of contact and support for school staff. Requests for support should be made securely by email to cspa@surreycc.gov.uk using the [Request for Support Form](#) urgent referrals should be made by telephone 0300 470 9100 (and ask for the priority line).
- Report concerns that a pupil may be at risk of radicalisation or involvement in terrorism, following the [Prevent referral process](#) and use the Prevent referral form to refer cases by e-mail to preventreferrals@surrey.pnn.police.uk . If the matter is urgent then Police must be contacted by dialling 999. In cases where further advice from the Police is sought dial 101 or 01483 632982 and ask to speak to the Prevent Supervisor for Surrey.

- The Department of Education has also set up a dedicated telephone helpline for staff and governors to raise concerns around Prevent (020 7340 7264).
- Refer cases where a crime may have been committed to the Police as required. NB: NPCC- When to call the police should help DSLs understand when they should consider calling the Police and what to expect when they do.
- Liaise with the “case manager” and Local Authority Designated Officer for child protection concerns in cases which concern a member of staff or a volunteer; and refer cases where a person is dismissed or left service due to risk/harm to a child to the Disclosure and Barring Service and Teaching Regulation Agency, as required.
- Record “low level concerns” in cases which concern a member of staff/supply staff/contractor or a volunteer. The record should include details of the concern, the context in which the concern arose, and action taken. The name of the individual sharing their concerns should also be noted, if the individual wishes to remain anonymous then that will be respected as far as reasonably possible.
- Follow DfE and KCSIE guidance on ‘Peer on Peer/child on child Abuse’ when a concern is raised that there is an allegation of a pupil abusing another pupil within the school.
- Follow KCSIE and DfE guidance contained in Sexual violence and sexual harassment between children in schools and colleges 2021 and be confident as to what local specialist support is available to support all children involved (including victims and alleged perpetrators) in sexual violence and sexual harassment and be confident as to how to access this support when required
- When there has been a report of sexual violence, make an immediate risk and needs assessment. Additionally, where there has been a report of sexual harassment, the need for a risk assessment should be considered on a case-by-case basis and will be put in place as required
- Be available during term time (during school hours) for staff in school to discuss any safeguarding concerns. Appropriate and adequate cover arrangements will be arranged by the DSL and the school leadership for any out of hours/term activities.
- Act as a source of support and expertise in carrying out safeguarding duties for the whole school community.
- Encourage and promote a culture of listening to children and taking account of their wishes and feelings, amongst all staff.
- Access training and support to ensure they have the knowledge and skills required to carry out the role. DSL training should be updated at least every two years and their knowledge and skills refreshed at regular intervals but at least annually.
- Have a secure working knowledge of SSCP procedures and understand the assessment process for providing early help and statutory intervention, including the local authority levels of need criteria and referral arrangements.
- Have a clear understanding of access and referral to the local early help offer and will support and advise members of staff where early help intervention is appropriate.
- Understand and support the school delivery with regards to the requirements of the Prevent duty and provide advice and guidance to staff on protecting children from radicalisation.
- Liaise with school staff (especially pastoral support, behaviour leads, school health colleagues and the SENDCO) on matters of safety and safeguarding and consult the SSCP Levels of Need document to inform decision making and liaison with relevant agencies.
- Be alert to the specific needs of children in need, those with SEND and young carers.
- Understand the risks associated with online activity and be confident that they have the up-to-date knowledge and capability to keep children safe whilst they are online at school; in particular understand the additional risks that children with SEND face online and the associated and appropriate support they require.

- Keep detailed, accurate records (either written or using appropriate secure online software), that include all concerns about a child even if there is no need to make an immediate referral and record the rationale for decisions made and action taken.
- Ensure that an indication of the existence of the additional child protection file is marked on the pupil school file record.
- Ensure that when a pupil transfers school (including in-year), their child protection file is passed to the new school as soon as possible, and within statutory timescales (separately from the main pupil file and ensuring secure transit) and that confirmation of receipt is received.
- Ensure that where a pupil transfers school and is on a child protection plan or is a child looked after, their information is passed to the new school immediately and that the child's social worker is informed. In addition, consideration should be given to a multi-agency schools transition meeting if the case is complex or on-going.
- If the transit method requires that a copy of the Child Protection file is retained until such a time that the new school acknowledges receipt of the original file, the copy should be securely destroyed on confirmation of receipt.
- Ensure that all appropriate staff members have a working knowledge and understanding of their role in case conferences, core groups and other multi-agency planning meetings, to ensure that they attend and are able to effectively contribute when required to do so; where a report is required, this should be shared with the parents prior to the meeting.
- Report to the Principal any significant issues for example, use of the [SSCP multi-agency escalation procedures](#), enquiries under section 47 of the Children Act 1989 and police investigations.
- Ensure that the case holding Social Worker is informed of any child currently with a child protection plan who is absent without explanation.
- Ensure that all staff sign to say they have read, understood and agree to work within the School's child protection policy, staff behaviour policy (code of conduct) and Keeping Children Safe in Education (KCSIE) Part 1 and annex A and ensure that the policies are used effectively.
- Organise child protection and safeguarding induction, regularly updated training and a minimum of annual updates (including online safety) for all school staff, keep a record of attendance and address any absences.
- Ensure that in collaboration with the school leadership and governors, the child protection policy is reviewed annually and the procedures and implementation are updated and reviewed regularly.
- Ensure that the Child Protection Policy is available publicly and that parents are aware that referrals about suspected harm and abuse will be made and the role of the school in this.
- Establish and maintain links with the Local Authority safeguarding partners to make sure staff are aware of training opportunities and the latest policies on local safeguarding arrangements.
- Contribute to and provide, with the Principal and Chair of Governors, the "Audit of Statutory Duties and Associated Responsibilities" to be submitted annually to the Surrey County Council, Education Safeguarding Team.
- Ensure that the names of the Designated Safeguarding and Child Protection Lead and deputies, are clearly advertised, with a statement explaining the school's role in referring and monitoring cases of suspected abuse.
- Meet all other responsibilities as set out for DSLs in Keeping Children Safe in Education 2021.

b) The Deputy Designated Safeguarding Lead(s):

In addition to the role and responsibilities of all staff the Deputy DSL will:

- Be trained to the same standard as the Designated Safeguarding Lead and the role is explicit in their job description.
- Provide support and capacity to the DSL in carrying out delegated activities of the DSL; however, the lead responsibility of the DSL cannot be delegated.
- In the absence of the DSL, carries out the activities necessary to ensure the ongoing safety and protection of children. In the event of the long-term absence of the DSL the deputy will assume all of the functions above.

9.4 The School Governing Body

All members of the school governing body understand and fulfil their responsibilities to ensure that:

- There is a whole school approach to safeguarding
- The school has effective safeguarding policies and procedures including a Child Protection Policy, a Staff Behaviour Policy or Code of Conduct, a Behaviour Policy and a response to children who go missing from education.
- Policies are consistent with Surrey Safeguarding Children Partnership (SSCP) and statutory requirements, are reviewed annually and that the Child Protection policy is available on the school website.
- The SSCP is informed in line with local requirements about the discharge of duties via the annual safeguarding audit.
- The school operates a safer recruitment procedure that includes statutory checks on staff suitability to work with children and disqualification by association regulations and by ensuring that there is at least one person on every recruitment panel who has completed safer recruitment training, if there is not a panel conducting interviews then the individual will have completed the safer recruitment training.
- At least one member of the governing body has completed safer recruitment training to be repeated every five years.
- Staff have been trained appropriately and this is updated in line with guidance and all staff have read Keeping Children Safe in Education (2021) part 1 and Annex A and that mechanisms are in place to assist staff in understanding and discharging their roles and responsibilities as set out in the guidance.
- All staff including temporary staff and volunteers are provided with the school's child protection policy and staff behaviour policy.
- The school has procedures for dealing with allegations of abuse against staff (including the Principal), volunteers and against other children and that a referral is made to the DBS and/or the Teaching Regulation Agency (as applicable) if a person in regulated activity has been dismissed or removed due to safeguarding concerns, or would have had they not resigned.
- Policies and processes are in place to deal with concerns (including allegations) which do not meet the harm threshold or "low level concerns" as defined in KCSIE 2021.

Additionally, they will ensure that:

- Children are taught about safeguarding (including online safety) as part of a broad and balanced curriculum covering relevant issues through personal, social, health and economic education (PSHE) and relationships and sex education (RSE).
- Application filters and monitoring systems are in place to safeguard children online.
- The school will comply with DfE and Surrey County Council Children Missing Education requirements.

- The school will comply with regular data returns requested by the Local Authority, regarding all pupils, of statutory school age, attending alternative provision and/or on a reduced or modified timetable
- The school has clear systems and processes in place for identifying possible mental health problems, including routes to escalate and clear referral and accountability systems. Mental health problems can, in some cases, be an indicator that a child has suffered or is at risk of suffering abuse, neglect or exploitation.
- Enhanced DBS checks (without barred list checks, unless the governor is also a volunteer at the school) are in place for all Governors.
- Any weaknesses in Safeguarding are remedied immediately.

9.5 Further roles and responsibilities

A nominated governor for safeguarding is identified. This individual will:

- Conduct termly reviews of the single central list
- Meet on a termly basis with the DSL to receive an overview of safeguarding cases or issues
- Be informed by the school of significant safeguarding failures on a case-by-case basis.

10 Confidentiality, Sharing and Withholding Information

All matters relating to child protection will be treated as confidential and only shared as per the [‘Information Sharing Advice for Practitioners’ \(DfE 2018\) guidance](#).

The school will refer to the guidance in the data protection: toolkit for schools - <https://www.gov.uk/government/publications/data-protection-toolkit-for-schools>

guidance to support schools with data protection activity, including compliance with the GDPR.

Information will be shared with staff within the school who ‘need to know’.

Relevant staff have due regard to Data Protection principles which allow them to share (and withhold) information. See Data Protection Policy.

All staff must be aware that they have a professional responsibility to share information with other agencies in order to safeguard children and that the Data Protection Act 1998 and General Data Protection Regulations are not a barrier to sharing information where a failure to do so would place a child at risk of harm. There is a lawful basis for child protection concerns to be shared with agencies who have a statutory duty for child protection.

All staff must be aware that they cannot promise a child to keep secrets which might compromise the child’s safety or wellbeing. However, staff are aware that matters relating to child protection and safeguarding are personal to children and families, in this respect they are confidential and the Principal or DSLs will only disclose information about a child to other members of staff on a need to know basis.

All staff will always undertake to gain parent/carers consent to refer a child to Social Care unless to do so could put the child at greater risk of harm or impede a criminal investigation.

11 Child Protection Procedures

The following procedures apply to all staff working in the school and will be covered by training to enable staff to understand their role and responsibility.

The aim of our procedures is to provide a robust framework which enables staff to take appropriate action when they are concerned that a child is being harmed or abused or is at risk of harm or abuse.

The prime concern at all stages must be the interests and safety of the child. Where there is a conflict of interest between the child and an adult, the interests of the child must be paramount.

All staff are aware that very young children and those with disabilities, special needs or with language delay may be more likely to communicate concerns with behaviours rather than words. Additionally, staff will question the cause of knocks and bumps in children who have limited mobility.

If a member of staff suspects abuse, spots signs or indicators of abuse, or they have a disclosure of abuse made to them they must:

1. Make an initial record of the information related to the concern via CPOMS.
2. Report it to the DSL immediately.
3. The DSL will consider if there is a requirement for immediate medical intervention, however urgent medical attention should not be delayed if the DSL is not immediately available.
4. Make an accurate record (which may be used in any subsequent court proceedings) as soon as possible and within 24 hours of the occurrence, of all that has happened, including details of:
 - Dates and times of their observations
 - Dates and times of any discussions in which they were involved.
 - Any injuries
 - Explanations given by the child / adult
 - Rationale for decision making and action taken
 - Any actual words or phrases used by the child
5. The records must be signed and dated by the author or / equivalent on electronic based records
6. In the absence of the DSL or their Deputy, staff must be prepared to refer directly to C-SPA (and the police if appropriate) if there is the potential for immediate significant harm

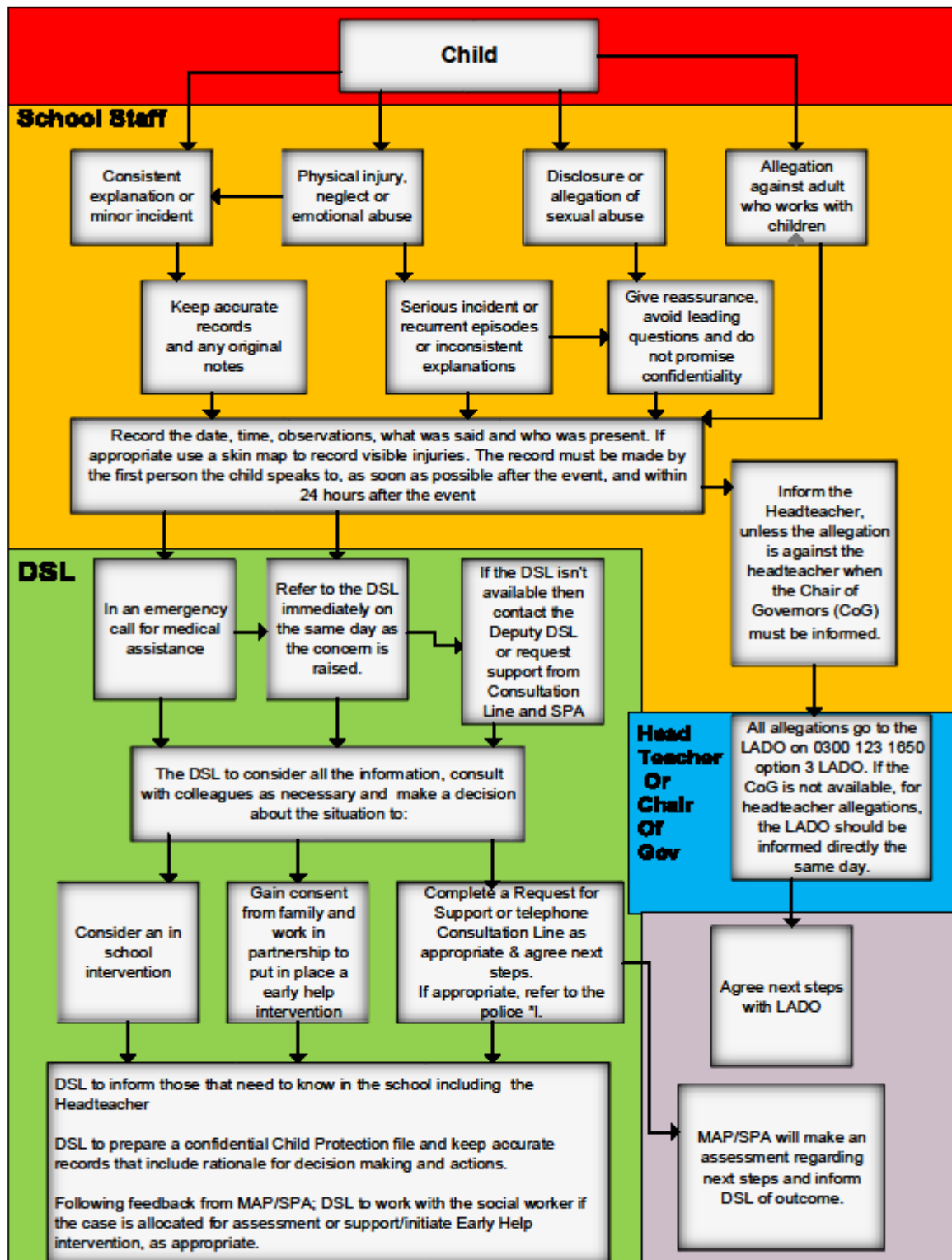
Following a report of concerns the DSL must:

1. Using the SSCP Levels of Need, decide whether or not there are sufficient grounds for suspecting significant harm, in which case a request for support must be made to the C-SPA and the police if it is appropriate.
2. Normally the school should try to discuss any concerns about a child's welfare with the family and where possible to seek their agreement before making a referral to the C-SPA. However, this should only be done when it will not place the child at increased risk or could impact a police investigation. The child's views should also be taken into account.

If there are grounds to suspect a child is suffering, or is likely to suffer, significant harm or abuse the DSL must contact the C-SPA. By sending a [Request for Support Form](#) by secure email to: cspa@surreycc.gov.uk contact the C-SPA consultation line on 0300 470 9100 to discuss the concerns. If a child is in immediate danger and urgent protective action is required, the Police (dial 999) must be called. The DSL must also notify the C-SPA of the occurrence and what action has been taken.

1. If the DSL feels unsure about whether a referral is necessary, they can phone the C-SPA to discuss concerns
2. If there is not a risk of significant harm, the DSL will either actively monitor the situation or consider offering early help.
3. Where there are doubts or reservations about involving the child's family, the DSL should clarify with the C-SPA or the police whether the parents should be told about the referral and, if so, when and by whom. This is important in cases where the police may need to conduct a criminal investigation.
4. When a pupil is in need of urgent medical attention and there is suspicion of abuse the DSL or their Deputy should take the child to the accident and emergency unit at the nearest hospital, having first notified the C-SPA. The DSL should seek advice about what action the C-SPA will take and about informing the parents, remembering that parents should normally be informed that a child requires urgent hospital attention.
5. The exception to this process will be in those cases of known FGM where there is a mandatory requirement for the teacher to report directly to the police. The DSL should also be made aware.

12 Child Protection Procedures Flowchart



* In the cases of known FGM, the teacher who was made aware will also make contact with the police

13 Dealing with disclosures

13.1 All staff

A member of staff who is approached by a child should listen positively and try to reassure them. They cannot promise complete confidentiality and should explain that they may need to pass information to other professionals to help keep the child or other children safe. The degree of confidentiality should always be governed by the need to protect the child.

Additional consideration needs to be given to children with communication difficulties and for those whose preferred language is not English. It is important to communicate with them in a way that is appropriate to their age, understanding and preference.

All staff should know who the DSL is and who to approach if the DSL is unavailable. All staff have the right to make a referral to the C-SPA or Police directly and should do this if, for whatever reason, there are difficulties following the agreed protocol, for example, they are the only adult on the school premises at the time and have concerns about sending a child home.

13.2 Guiding principles, the seven R's

c) Receive

- Listen to what is being said, without displaying shock or disbelief
- Accept what is said and take it seriously
- Make a note of what has been said as soon as practicable

d) Reassure

- Reassure the pupil, but only so far as is honest and reliable
- Don't make promises you may not be able to keep e.g. 'I'll stay with you' or 'everything will be alright now' or 'I'll keep this confidential'
- Do reassure, for example, you could say: 'I believe you', 'I am glad you came to me', 'I am sorry this has happened', 'We are going to do something together to get help'

e) Respond

- Respond to the pupil only as far as is necessary for you to establish whether or not you need to refer this matter, but do not interrogate for full details
- Do not ask 'leading' questions i.e. 'did he touch your private parts?' or 'did she hurt you?' Such questions may invalidate your evidence (and the child's) in any later prosecution in court
- Do not ask the child why something has happened.
- Do not criticize the alleged perpetrator; the pupil may care about him/her, and reconciliation may be possible
- Do not ask the pupil to repeat it all for another member of staff. Explain what you have to do next and whom you have to talk to. Reassure the pupil that it will be a senior member of staff

f) Report

- Share concerns with the DSL immediately.
- If you are not able to contact your DSL or the Deputy DSL, and the child is at risk of immediate harm, contact the C-SPA or Police, as appropriate directly

- If you are dissatisfied with the level of response you receive following your concerns, you should press for re-consideration

g) Record

- If possible, make some very brief notes at the time, and write them up as soon as possible
- Keep your original notes on file
- Record the date, time, place, person/s present and noticeable nonverbal behaviour, and the words used by the child. If the child uses sexual 'pet' words, record the actual words used, rather than translating them into 'proper' words
- If appropriate, complete a body map to indicate the position of any noticeable bruising
- Record facts and observable things, rather than your 'interpretations' or 'assumptions'

h) Remember

- Support the child: listen, reassure, and be available
- Complete confidentiality is essential. Share your knowledge only with appropriate professional colleagues
- Get some support for yourself if you need it

i) Review (led by DSL)

- Has the action taken provided good outcomes for the child?
- Did the procedure work?
- Were any deficiencies or weaknesses identified in the procedure? Have these been remedied?
- Is further training required?

13.3 What happens next?

It is important that concerns are followed up and it is everyone's responsibility to ensure that they are. The member of staff should be informed by the DSL what has happened following a report being made. If they do not receive this information, they should seek it out.

If they have concerns that the disclosure has not been acted upon appropriately, they might inform the Principal or Safeguarding Governor of the school and/or may contact the C-SPA.

Receiving a disclosure can be upsetting for the member of staff and schools should have a procedure for supporting them after the disclosure. This might include reassurance that they have followed procedure correctly and that their swift actions will enable the allegations to be handled appropriately.

In some cases, additional counselling might be needed, and staff should be encouraged to recognise that disclosures can have an impact on their own emotions.

13.4 Safeguarding concerns and allegations against adults who work with children

The following procedure should be used in all cases in which it is alleged a member of staff, including supply staff or volunteer in a school, or another adult who works with children has:

- behaved in a way that has harmed a child, or may have harmed a child;
- possibly committed a criminal offence against or related to a child; or

- behaved towards a child or children in a way that indicates he or she would pose a risk of harm to children
- behaved or been involved in an incident outside of a setting which did not involve children but could impact on their suitability to work with children

In dealing with allegations or concerns against an adult, staff must:

- Report any concerns about the conduct of any member of staff or volunteer to the Principal immediately.
- If an allegation is made against the Principal, or a member of the central team, concerns need to be raised with the Chief Executive Officer (CEO).
- If an allegation is made against the CEO, or a Trustee, concerns need to be raised with the Chair of Trustees as soon as possible. If the Chair of Trustees is not available, or is the subject of concern, then the LADO should be contacted directly.
- There may be situations when the Headteacher, Chair of Governors or the Trust Executive Team or Trustees will want to involve the police immediately if the person is deemed to be an immediate risk to children or there is evidence of a possible criminal offence.
- Once an allegation has been received by the Principal, Chair of Governors or the Trust Executive Team or Trustees they will contact the LADO (as part of their mandatory duty) -see contact details at the front of this policy.
- Email the LADO immediately and before taking any action or investigation.
- Following consultation with the LADO inform the parents of the allegation unless there is a good reason not to.

In liaison with the LADO, the school/trust will determine how to proceed and if necessary, the LADO will refer the matter to Children's Social Care and/or the police.

If the matter is investigated internally, the LADO will advise the school/trust to seek guidance from local authority colleagues in following procedures set out in part 4 of 'Keeping Children Safe in Education' (2021) and the SSCP procedures.

14 What is child abuse?

The following definitions are taken from *Working Together to Safeguard Children* HM Government (2018). In addition to these definitions, it should be understood that children can also be abused by being sexually exploited, honour based violence, forced marriage or female genital mutilation. To support the local context, all staff have access to the [Surrey Safeguarding Children Partnership Levels of Need Threshold Document](#).

14.1 What is abuse and neglect?

Abuse and neglect are forms of maltreatment of a child. Somebody may abuse or neglect a child by inflicting harm, or by failing to act to prevent harm. Children may be abused in a family or in an institutional or community setting, by those known to them or, more rarely, by a stranger. They may be abused by an adult or adults, or another child or children.

a) Physical abuse

Physical abuse may involve hitting, shaking, throwing, poisoning, burning or scalding, drowning, suffocating, or otherwise causing physical harm to a child. Physical harm may also be caused when a parent or carer fabricates the symptoms of, or deliberately induces, illness in a child.

b) Emotional abuse

The persistent emotional maltreatment of a child such as to cause severe and persistent adverse effects on the child's emotional development.

It may involve conveying to a child that they are worthless or unloved, inadequate, or valued only insofar as they meet the needs of another person. It may include not giving the child opportunities to express their views, deliberately silencing them or 'making fun' of what they say or how they communicate. It may feature age or developmentally inappropriate expectations being imposed on children.

These may include interactions that are beyond a child's developmental capability, as well as overprotection and limitation of exploration and learning, or preventing the child participating in normal social interaction. It may involve seeing or hearing the ill-treatment of another.

It may involve serious bullying (including cyber bullying), causing children frequently to feel frightened or in danger, or the exploitation or corruption of children. Some level of emotional abuse is involved in all types of maltreatment of a child, although it may occur in isolation.

c) Sexual abuse

Involves forcing or enticing a child or young person to take part in sexual activities, not necessarily involving a high level of violence, whether or not the child is aware of what is happening. The activities may involve physical contact, including assault by penetration (for example, rape or oral sex) or non-penetrative acts such as masturbation, kissing, rubbing and touching outside of clothing. They may also include non-contact activities, such as involving children in looking at, or in the production of, sexual images, watching sexual activities, encouraging children to behave in sexually inappropriate ways, or grooming a child in preparation for abuse (including online).

Sexual abuse is not solely perpetrated by adult males. Women can also commit acts of sexual abuse, as can other children.

d) Neglect

Neglect is the persistent failure to meet a child's basic physical and/or psychological needs, likely to result in the serious impairment of the child's health or development.

Neglect may occur during pregnancy as a result of maternal substance abuse. Once a child is born, neglect may involve a parent or carer failing to:

- provide adequate food, clothing and shelter (including exclusion from home or abandonment)
- protect a child from physical and emotional harm or danger
- ensure adequate supervision (including the use of inadequate care-givers)
- ensure access to appropriate medical care or treatment

It may also include neglect of, or unresponsiveness to, a child's basic emotional needs.

The [Neglect Risk Assessment Tool](#) is available to provide a more detailed information regarding the assessment of neglect.

15 Indicators of abuse

15.1 Neglect

a) The nature of neglect

Neglect is a lack of parental care but poverty and lack of information or adequate services can be contributory factors.

Far more children are registered to the category of neglect on Child in Need and Child Protection plans than to the other categories. As with abuse, the number of children experiencing neglect is likely to be much higher than the numbers on the plans.

Neglect can include parents or carers failing to:

- provide adequate food, clothing and shelter
- protect a child from physical and emotional harm or danger
- ensure adequate supervision or stimulation
- ensure access to appropriate medical care or treatment

NSPCC research has highlighted the following examples of the neglect of children under 12 years old:

- frequently going hungry
- frequently having to go to school in dirty clothes
- regularly having to look after themselves because of parents being away or having problems such as drug or alcohol misuse
- being abandoned or deserted
- living at home in dangerous physical conditions
- not being taken to the doctor when ill
- not receiving dental care.

Neglect is a difficult form of abuse to recognise and is often seen as less serious than other categories. It is, however, very damaging: children who are neglected often develop more slowly than others and may find it hard to make friends and fit in with their peer group.

Neglect is often noticed at a stage when it does not pose a risk to the child. The duty to safeguard and promote the welfare of children (*What to do if You're Worried a Child is Being Abused* DfE 2015) would suggest that an appropriate intervention or conversation at this early stage can address the issue and prevent a child continuing to suffer until it reaches a point when they are at risk of harm or in significant need.

Neglect is often linked to other forms of abuse, so any concerns school staff have should be discussed with the DSL.

b) Indicators of neglect

The following is a summary of some of the indicators that may suggest a child is being abused or is at risk of harm.

It is important to recognise that indicators alone cannot confirm whether a child is being abused. Each child should be seen in the context of their family and wider community and a proper assessment carried out by appropriate persons. What is important to keep in mind is that if you feel unsure or concerned, do something about it. Don't keep it to yourself. The

[Neglect Risk Assessment Tool](#) provides staff with a resource to identify and act on concerns regarding neglect.

Physical indicators of neglect

- Constant hunger and stealing food
- Poor personal hygiene - unkempt, dirty or smelly
- Underweight
- Dress unsuitable for weather
- Poor state of clothing
- Illness or injury untreated

Behavioural indicators of neglect

- Constant tiredness
- Frequent absence from school or lateness
- Missing medical appointments
- Isolated among peers
- Frequently unsupervised
- Stealing or scavenging, especially food
- Destructive tendencies

15.2 Emotional abuse

a) The nature of emotional abuse

Most harm is produced in *low warmth, high criticism* homes, not from single incidents.

Emotional abuse is difficult to define, identify/recognise and/or prove.

Emotional abuse is chronic and cumulative and has a long-term impact.

All kinds of abuse and neglect have emotional effects although emotional abuse can occur by itself.

Children can be harmed by witnessing someone harming another person – as in domestic abuse.

It is sometimes possible to spot emotionally abusive behaviour from parents and carers to their children, by the way that the adults are speaking to, or behaving towards children. An appropriate challenge or intervention could affect positive change and prevent more intensive work being carried out later on.

b) Indicators of emotional abuse

Developmental issues

- Delays in physical, mental and emotional development
- Poor school performance
- Speech disorders, particularly sudden disorders or changes.

Behaviour

- Acceptance of punishment which appears excessive
- Over-reaction to mistakes
- Continual self-deprecation (I'm stupid, ugly, worthless etc)
- Neurotic behaviour (such as rocking, hair-twisting, thumb-sucking)
- Self-mutilation
- Suicide attempts
- Drug/solvent abuse
- Running away
- Compulsive stealing, scavenging
- Acting out
- Poor trust in significant adults
- Regressive behaviour – e.g., wetting
- Eating disorders
- Destructive tendencies
- Neurotic behaviour
- Arriving early at school, leaving late

Social issues

- Withdrawal from physical contact
- Withdrawal from social interaction
- Over-compliant behaviour
- Insecure, clinging behaviour
- Poor social relationships

Emotional responses

- Extreme fear of new situations
- Inappropriate emotional responses to painful situations (“I deserve this”)
- Fear of parents being contacted
- Self-disgust
- Low self-esteem
- Unusually fearful with adults
- Lack of concentration, restlessness, aimlessness
- Extremes of passivity or aggression

15.3 Physical abuse

a) The nature of physical abuse

Most children collect cuts and bruises quite routinely as part of the rough and tumble of daily life. Clearly, it is not necessary to be concerned about most of these minor injuries. But accidental injuries normally occur on the *bony prominences* – e.g. knees, shins.

Injuries on the *soft* areas of the body are more likely to be inflicted intentionally and should therefore make us more alert to other concerning factors that may be present.

A body map can assist in the clear recording and reporting of physical abuse. The body map should only be used to record observed injuries and no child should be asked to remove clothing by a member of staff of the school.

Indicators of physical abuse / factors that should increase concern

- Multiple bruising or bruises and scratches (especially on the head and face)
- Clusters of bruises – e.g., fingertip bruising (caused by being grasped)
- Bruises around the neck and behind the ears – the most common abusive injuries are to the head
- Bruises on the back, chest, buttocks, or on the inside of the thighs
- Marks indicating injury by an instrument – e.g., linear bruising (stick), parallel bruising (belt), marks of a buckle
- Bite marks
- Deliberate burning may also be indicated by the pattern of an instrument or object – e.g., electric fire, cooker, cigarette
- Scalds with upward splash marks or *tide marks*
- Untreated injuries
- Recurrent injuries or burns
- Bald patches.

In the context of the school, it is normal to ask about a noticeable injury. The response to such an enquiry is generally light-hearted and detailed. So, most of all, concern should be increased when:

- the explanation given does not match the injury
- the explanation uses words or phrases that do not match the vocabulary of the child (adults words)
- no explanation is forthcoming
- the child (or the parent/carer) is secretive or evasive
- the injury is accompanied by allegations of abuse or assault

You should be concerned if a child:

- is reluctant to have parents/carers contacted
- runs away or shows fear of going home
- is aggressive towards themselves or others
- flinches when approached or touched
- is reluctant to undress to change clothing for sport
- wears long sleeves during hot weather
- is unnaturally compliant in the presence of parents/carers.
- has a fear of medical help or attention
- admits to a punishment that appears excessive.

15.4 Sexual Abuse

a) The nature of sexual abuse

Sexual abuse is often perpetrated by people who are known and trusted by the child – e.g., relatives, family friends, neighbours, babysitters, and people working with the child in school, faith settings, clubs or activities. Children can also be subject to child sexual exploitation.

Sexual exploitation is seen as a separate category of sexual abuse. The [SSCP professional guidance](#) provides school staff with information regarding indicators of CSE (further information about CSE is available on pages 45-46).

Characteristics of child sexual abuse:

- it is often planned and systematic – people do not sexually abuse children by accident, though sexual abuse can be opportunistic

- grooming the child – people who abuse children take care to choose a vulnerable child and often spend time making them dependent (this may occur online)
- grooming the child's environment – abusers try to ensure that potential adult protectors (parents and other carers especially) are not suspicious of their motives.

Most people who sexually abuse children are men, but some women sexually abuse too.

b) Indicators of sexual abuse

Physical observations:

- Damage to genitalia, anus or mouth
- Sexually transmitted diseases
- Unexpected pregnancy, especially in very young girls
- Soreness in genital area, anus or mouth and other medical problems such as chronic itching
- Unexplained recurrent urinary tract infections and discharges or abdominal pain

Behavioural observations:

- Sexual knowledge inappropriate for age
- Sexualised behaviour or affection inappropriate for age
- Sexually inappropriate behaviour
- Hinting at sexual activity
- Inexplicable decline in education progress
- Depression or other sudden apparent changes in personality as becoming insecure
- Lack of concentration, restlessness, aimlessness
- Socially isolated or withdrawn
- Overly-compliant behaviour
- Acting out, aggressive behaviour
- Poor trust or fear concerning significant adults
- Regressive behaviour,
- Onset of wetting, by day or night; nightmares
- Arriving early at school, leaving late, running away from home
- Suicide attempts, self-mutilation,
- Suddenly drawing sexually explicit pictures
- Eating disorders or sudden loss of appetite or compulsive eating
- Regressing to younger behaviour patterns such as thumb sucking or bringing out discarded cuddly toys
- Become worried about clothing being removed
- Trying to be 'ultra-good' or perfect; overreacting to criticism.

16 Sexual violence and sexual harassment between children in schools

16.1 Peer on Peer/Child on Child Abuse

Kings College Guildford have a zero tolerance approach to any abusive behaviour. Kings College Guildford will follow protocol set out in national guidance - Sexual Violence and Sexual Harassment between Children in Schools and Colleges guidance (DfE 2021) and KCSiE 2021.

16.2 Context

Sexual violence and sexual harassment can occur between two children of any age and sex. It can also occur through a group of children sexually assaulting or sexually harassing a single child or group of children.

Children who are victims of sexual violence and sexual harassment will likely find the experience stressful and distressing. This will, in all likelihood, adversely affect their education attainment as well as their emotional well-being. Sexual violence and sexual harassment exist on a continuum and may overlap; they can occur online and offline (both physically and verbally) and are never acceptable. It is important that all victims are taken seriously and offered appropriate support.

Reports of sexual violence and sexual harassment are extremely complex to manage. It is essential that victims are protected, offered appropriate support and every effort is made to ensure their education is not disrupted. It is also important that other children, adult students and school and college staff are supported and protected as appropriate.

16.3 Policy

We believe that all children have a right to attend school and learn in a safe environment. Children should be free from harm by adults and other children in school.

We recognise that children are capable of abusing other children and their peers and this will be dealt with under our child protection policy and in line with KCSiE (2020) and following recommendations from the Sexual Violence and Sexual Harassment between Children in Schools and Colleges guidance (DfE 2021).

We are clear that sexual violence and sexual harassment is not acceptable, will never be tolerated and is not an inevitable part of growing up

We will minimise the risk of peer on peer/child on child abuse by:

16.4 Prevention

- Taking a whole school approach to safeguarding & child protection
- Providing training to staff
- Providing a clear set of values and standards, underpinned by the school's behaviour policy and pastoral support; and by a planned programme of evidence-based content delivered through the curriculum.
- Engaging with specialist support and interventions.
- Responding to reports of sexual violence and sexual harassment

The Voyeurism (Offences) Act, which is commonly known as the Upskirting Act, came into force on 12 April 2019. 'Upskirting' is where someone takes a picture under a person's clothing (not necessarily a skirt) without their permission and or knowledge, with the intention of viewing their genitals or buttocks (with or without underwear) to obtain sexual gratification, or cause the victim humiliation, distress or alarm. It is a criminal offence. Anyone of any gender, can be a victim.

Children making a report of sexual violence or sexual harassment including "upskirting" (which is a criminal offence) will be taken seriously, kept safe and be well supported.

If the report includes an online element staff will be mindful of the Searching, Screening and Confiscation: advice for schools (DfE 2018) guidance.

Staff taking the report will inform the DSL or the Deputy DSL immediately.

Staff taking a report will never promise confidentiality.

Parents or carers should usually be informed (unless this would put the child at greater risk).

If a child is at risk of harm, is in immediate danger, or has been harmed, a Request for Support will be made to the C-SPA (see contacts sheet), as appropriate.

16.5 Risk Assessment

Following a report, the DSL will make an immediate risk and needs assessment on a case-by-case basis.

The risk assessment will consider:

- The victim, especially their protection and support.
- The alleged perpetrator, their support needs and any discipline action.
- All other children at the school.
- The victim and the alleged perpetrator sharing classes and space at school.
- The risk assessment will be recorded and kept under review.

Where there has been other professional intervention and/or other specialist risk assessments, these professional assessments will be used to inform the school's approach to supporting and protecting pupils.

Support regarding risk assessments can be accessed from the [Education Safeguarding Team – education.safeguarding@surreycc.gov.uk](mailto:education.safeguarding@surreycc.gov.uk)

16.6 Action

The DSL will consider:

- The wishes of the victim.
- The nature of the incident including whether a crime has been committed and the harm caused.
- Ages of the children involved.
- Developmental stages of the children.
- Any power imbalance between the children.
- Any previous incidents.
- Ongoing risks.
- Other related issues or wider context.

16.7 Options

- Manage internally
- Early Help intervention
- Request for support to the C-SPA
- Report to the police (generally in parallel with a request for support to the C-SPA)

16.8 Ongoing Response

The DSL will manage each case individually and will ensure the risk assessment is reviewed regularly with relevant partner agencies, for example the Police and Children's Social Care.

Where there is a criminal investigation into a rape, assault by penetration or sexual assault, the alleged perpetrator should be removed from any classes they share with the victim.

The DSL will consider how best to keep the victim and perpetrator a reasonable distance apart on school premises and on transport where appropriate.

Where a criminal investigation into a rape or assault by penetration leads to a conviction or caution, the school will take suitable action. In all but the most exceptional of circumstances, the rape or assault is likely to constitute a serious breach of discipline and may lead to the view that allowing the perpetrator to remain in the same school or college would seriously harm the education or welfare of the victim (and potentially themselves and other pupils).

Where a criminal investigation into sexual assault leads to a conviction or caution, the school or college will, if it has not already, consider any suitable sanctions in light of their behaviour policy, which may include consideration of permanent exclusion. Where the perpetrator is going to remain at the school or college, the Principal should continue keeping the victim and perpetrator in separate classes and continue to consider the most appropriate way to manage potential contact on school and college premises and transport. The nature of the conviction or caution and wishes of the victim will be especially important in determining how to proceed in such cases.

The victim, alleged perpetrator and any other children & adults affected will receive appropriate support and safeguards on a case-by-case basis.

The school will take any disciplinary action against the alleged perpetrator in accordance with the school behaviour policy.

The school recognises that taking disciplinary action and providing appropriate support are not mutually exclusive actions and will occur at the same time if necessary.

16.9 Physical Abuse

While a clear focus of peer on peer/child on child abuse is around sexual abuse and harassment, physical assaults and initiation violence and rituals from pupils to pupils can also be abusive.

These are equally not tolerated and if it is believed that a crime has been committed, will be reported to the police.

The principles from the anti-bullying policy will be applied in these cases, with recognition that any police investigation will need to take priority.

References:

- *DfE Keeping Children Safe in Education 2021*
- *DfE Sexual Violence and Sexual Harassment between Children in Schools and Colleges May 2018*

16.10 Harmful Sexual Behaviour

The [Brook Traffic Light Tool](#) uses a traffic light system to categorise the sexual behaviours of young people and is designed to help professionals:

- Make decisions about safeguarding children and young people
- Assess and respond appropriately to sexual behaviour in children and young people

- Understand healthy sexual development and distinguish it from harmful behaviour
- By categorising sexual behaviours, the school can work with other agencies to the same standardised criteria when making decisions and can protect children and young people with a multi-agency approach.

The school recognises that it is vital that professionals agree on how behaviours should be categorised regardless of culture, faith, beliefs, and their own experiences or values.

a) Notes on the Tool

The Brook Traffic Light Tool is intended to be used as a guide only. Please refer to the guidance tool at <https://www.brook.org.uk/our-work/the-sexual-behaviours-traffic-light-tool> for further information

Print date: 01/10/2015 - Brook has taken every care to ensure that the information contained in this publication is accurate and up-to-date at the time of being published. As information and knowledge is constantly changing, readers are strongly advised to use this information for up to one month from print date. Brook accepts no responsibility for difficulties that may arise as a result of an individual acting on the advice and recommendations it contains.

Brook sexual behaviours traffic light tool adapted from Family Planning Queensland. (2012). Traffic Lights guide to sexual behaviours. Brisbane: Family Planning Queensland, Australia.

Powered by TCPDF (www.tcpdf.org)

a) Brook sexual behaviors traffic light tool

Behaviours: age 11 to 13

All green, amber and red behaviours require some form of attention and response. It is the level of intervention that will vary.

What is a green behaviour?

Green behaviours reflect safe and healthy sexual development. They are displayed between children or young people of similar age or developmental ability. They are reflective of natural curiosity, experimentation, consensual activities and positive choices.

What can you do?

Green behaviours provide opportunities to give positive feedback and additional information.

Green behaviours 9-13

- solitary masturbation
- use of sexual language including swear and slang words
- having girl/boyfriends who are of the same, opposite or any gender
- interest in popular culture, e.g. fashion, music, media, online games, chatting online
- need for privacy
- consensual kissing, hugging, holding hands with peers

What is an amber behaviour?

Amber behaviours have the potential to be outside of safe and healthy behaviour. They may be of potential concern due to age, or developmental differences. A potential concern due to activity type, frequency, duration or context in which they occur.

What can you do?

Amber behaviours signal the need to take notice and gather information to assess the appropriate action.

Amber behaviours 9-13

- uncharacteristic and risk-related behaviour, e.g. sudden and/or provocative changes in dress, withdrawal from friends, mixing with new or older people, having more or less money than usual, going missing
- verbal, physical or cyber/virtual sexual bullying involving sexual aggression
- LGBT (lesbian, gay, bisexual, transgender) targeted bullying
- exhibitionism, e.g. flashing or mooning
- giving out contact details online

What is a red behaviour?

Red behaviours are outside of safe and healthy behaviour. They may be excessive, secretive, compulsive, coercive, degrading or threatening and involving significant age, developmental, or power differences. They may pose a concern due to the activity type, frequency, duration or the context in which they occur.

What can you do?

Red behaviours indicate a need for immediate intervention and action.

Red behaviours 9-13

- exposing genitals or masturbating in public
- distributing naked or sexually provocative images of self or others
- sexually explicit talk with younger children
- sexual harassment
- arranging to meet with an online acquaintance in secret
- genital injury to self or others
- forcing other children of same age, younger or less able to take part in sexual activities
- sexual activity e.g. oral sex or intercourse

- viewing pornographic material
- worrying about being pregnant or having STIs
- preoccupation with adult sexual behaviour
- pulling other children's pants down/skirts up/trousers down against their will
- talking about sex using adult slang
- preoccupation with touching the genitals of other people
- following others into toilets or changing rooms to look at them or touch them
- talking about sexual activities seen on TV/online
- presence of sexually transmitted infection (STI)
- evidence of pregnancy
- Red behaviours
- persistently touching the genitals of other children
- persistent attempts to touch the genitals of adults
- simulation of sexual activity in play
- sexual behaviour between young children involving penetration with objects
- forcing other children to engage in sexual play
- signs of pregnancy

Behaviours: age 13 to 17

All green, amber and red behaviours require some form of attention and response. It is the level of intervention that will vary.

What is a green behaviour?

Green behaviours reflect safe and healthy sexual development. They are displayed between children or young people of similar age or developmental ability. They are reflective of natural curiosity, experimentation, consensual activities and positive choices.

What can you do?

Green behaviours provide opportunities to give positive feedback and additional information.

Green behaviours 13-17

What is an amber behaviour?

Amber behaviours have the potential to be outside of safe and healthy behaviour. They may be of potential concern due to age, or developmental differences. A potential concern due to activity type, frequency, duration or context in which they occur.

What can you do?

Amber behaviours signal the need to take notice and gather information to assess the appropriate action.

Amber behaviours 9-13

What is a red behaviour?

Red behaviours are outside of safe and healthy behaviour. They may be excessive, secretive, compulsive, coercive, degrading or threatening and involving significant age, developmental, or power differences. They may pose a concern due to the activity type, frequency, duration or the context in which they occur.

What can you do?

Red behaviours indicate a need for immediate intervention and action.

Red behaviours 9-13

- solitary masturbation
- sexually explicit conversations with peers
- obscenities and jokes within the current cultural norm
- interest in erotica/pornography
- use of internet/e-media to chat online
- having sexual or non-sexual relationships
- sexual activity including hugging, kissing, holding hands
- consenting oral and/or penetrative sex with others of the same or opposite gender who are of similar age and developmental ability
- choosing not to be sexually active
- accessing exploitative or violent pornography
- uncharacteristic and risk-related behaviour, e.g. sudden and/or provocative changes in dress,
- withdrawal from friends, mixing with new or older people, having more or less money than usual, going missing
- concern about body image
- taking and sending naked or sexually provocative images of self or others
- single occurrence of peeping, exposing, mooning or obscene gestures
- giving out contact details online
- joining adult- only social networking sites and giving false personal information
- arranging a face to face meeting with an online contact alone
- exposing genitals or masturbating in public
- preoccupation with sex, which interferes with daily function
- sexual degradation/humiliation of self or others
- attempting/forcing others to expose genitals
- sexually aggressive/exploitative behaviour
- sexually explicit talk with younger children
- sexual harassment
- non-consensual sexual activity
- use of/acceptance of power and control in sexual relationships
- genital injury to self or others
- sexual contact with others where there
- is a big difference in age or ability
- sexual activity with someone in authority and in a position of trust
- sexual activity with family members
- involvement in sexual exploitation and/or trafficking
- sexual contact with animals
- receipt of gifts or money in exchange for sex

17 Anti-Bullying/Cyberbullying

Our school policy on anti-bullying is set out in a separate document and acknowledges that to allow or condone bullying may lead to consideration under child protection procedures.

We keep a record of known bullying incidents which is shared with, and analysed by the governing body. All staff are aware that children with SEND and/or differences/perceived differences are more susceptible to being bullied/victims of child abuse.

When there is 'reasonable cause to suspect that a child is suffering, or is likely to suffer, significant harm' a bullying incident should be addressed as a child protection concern. If the anti-bullying procedures are seen to be ineffective, the Principal and the DSL will also consider child protection procedures.

PSHE education regularly provides opportunities for children to understand bullying is wrong, its impact and how to deal with it.

18 Online Safety

The school has an online safety policy which explains how we try to keep pupils safe in school and how we respond to online safety incidents.

Children increasingly use electronic equipment on a daily basis to access the internet, share and view content and images via social media sites such as Facebook, twitter, Instagram, snapchat and voodoo and for online gaming.

Some adults and other children use these technologies to harm children. The harm might range from sending hurtful or abusive texts or emails, to grooming and enticing children to engage in extremist or sexual behaviour involving webcam photography or face-to-face meetings.

Pupils may also be distressed or harmed by accessing inappropriate material such as pornographic websites or those which promote extremist behaviour, criminal activity, suicide or eating disorders

Pupils are taught about online safety throughout the curriculum and all staff receive online safety training which is regularly updated. The school online safety co-ordinator is listed at the front of this policy.

Children with particular skill and interest in computing and technology may inadvertently or deliberately stray into cyber-dependent crime. If there are concerns about a child in this area, the DSL (or a deputy), will consider a referral into the Cyber Choices programme.

This programme aims to intervene where young people are at risk of committing, or being drawn into, low level cyber-dependent offences and divert them to a more positive use of their skills and interests.

19 Racist Incidents

Our policy on racist incidents is set out separately, and acknowledges that repeated racist incidents or a single serious incident may lead to consideration under child protection procedures. We keep a record of racist incidents.

20 Radicalisation, Extremism and Terrorism

[The Prevent Duty for England and Wales \(2015\)](#) under section 26 of the Counter-Terrorism and Security Act 2015 places a duty on education and other children's services to have due regard to the need to prevent people from being drawn into terrorism.

Extremism is defined as 'vocal or active opposition to fundamental British values, including democracy, the rule of law, individual liberty and mutual respect and tolerance of different faiths and beliefs'. We also include in our definition of extremism calls for the death of members of our armed forces, whether in this country or overseas.

Terrorism is an action that endangers or causes serious violence to a person/people; causes serious violence to a person/people; causes serious damage to property; or seriously interferes with an electronic system. The use or threat **must** be designed to influence the government or to intimidate the public and is made for the purpose of advancing a political, religious or ideological cause.

Some children are at risk of being radicalised; adopting beliefs and engaging in activities which are harmful, criminal or dangerous. This can happen both online and offline.

The school is clear that exploitation of vulnerable children and radicalisation should be viewed as a safeguarding concern and follows the Department for Education guidance for schools and childcare providers on preventing children and young people from being drawn into terrorism.

The school seeks to protect children and young people against the messages of all violent extremism including, but not restricted to, those linked to Islamist ideology, or to Far Right / Neo Nazi / White Supremacist ideology, Irish Nationalist and Loyalist paramilitary groups, and extremist Animal Rights movements.

School staff receive training to help identify early signs of radicalisation and extremism.

Opportunities are provided in the curriculum to enable pupils to discuss issues of religion, ethnicity and culture and the school follows the [DfE advice Promoting Fundamental British Values as part of SMSC \(spiritual, moral, social and cultural education\) in Schools \(2014\)](#).

The school governors, the Principal and the Designated Safeguarding Lead (DSL) will assess the level of risk within the school and put actions in place to reduce that risk. Risk assessment may include, [due diligence checks for external speakers and private hire of facilities](#), anti-bullying policy and other issues specific to the school's profile, community and philosophy.

When any member of staff has concerns that a pupil may be at risk of radicalisation or involvement in terrorism, they should speak with the DSL in the first instance.

They should then follow the safeguarding procedures and refer cases by e-mail to preventreferrals@surrey.pnn.police.uk following the [Prevent referral process](#) and use the Prevent referral form. If the matter is urgent then Police must be contacted by dialling 999. In cases where further advice from the Police is sought dial 101 or 01483 632982 and ask to speak to the Prevent Supervisor for Surrey.

The Department for Education has also set up a dedicated telephone helpline for staff and governors to raise concerns around Prevent (020 7340 7264).

20.1 Indicators of vulnerability to radicalisation

Radicalisation refers to the process by which a person comes to support terrorism and forms of extremism leading to terrorism.

Extremism is defined by the Crown Prosecution Service as:

- The demonstration of unacceptable behaviour by using any means or medium to express views which:
- Encourage, justify or glorify terrorist violence in furtherance of particular beliefs;
- Seek to provoke others to terrorist acts;
- Encourage other serious criminal activity or seek to provoke others to serious criminal acts; or
- Foster hatred which might lead to inter-community violence in the UK.

There is no such thing as a "typical extremist": those who become involved in extremist actions come from a range of backgrounds and experiences, and most individuals, even those who hold radical views, do not become involved in violent extremist activity.

Pupils may become susceptible to radicalisation through a range of social, personal and environmental factors - it is known that violent extremists exploit vulnerabilities in individuals to drive a wedge between them and their families and communities. It is vital that school staff are able to recognise those vulnerabilities.

Indicators of vulnerability include:

- **Identity Crisis** – the student / pupil is distanced from their cultural / religious heritage and experiences discomfort about their place in society;
- **Personal Crisis** – the student / pupil may be experiencing family tensions; a sense of isolation; and low self-esteem; they may have dissociated from their existing friendship group and become involved with a new and different group of friends; they may be searching for answers to questions about identity, faith and belonging;
- **Personal Circumstances** – migration; local community tensions; and events affecting the student / pupil's country or region of origin may contribute to a sense of grievance that is triggered by personal experience of racism or discrimination or aspects of Government policy;
- **Unmet Aspirations** – the student / pupil may have perceptions of injustice or a feeling of failure,
- **Experiences of Criminality** – which may include involvement with criminal groups, imprisonment, and poor resettlement / reintegration;
- **Special Educational Needs and Disability** – students / pupils may experience difficulties with social interaction, empathy with others, understanding the consequences of their actions and awareness of the motivations of others.

However, this list is not exhaustive, nor does it mean that all young people experiencing the above are at risk of radicalisation for the purposes of violent extremism.

More critical risk factors in all of the above could include:

- Being in contact with extremist recruiters;
- Accessing violent extremist websites, especially those with a social networking element;
- Possessing or accessing violent extremist literature;
- Using extremist narratives and a global ideology to explain personal disadvantage;
- Justifying the use of violence to solve societal issues;
- Joining or seeking to join extremist organisations;
- Significant changes to appearance and / or behaviour;
- Experiencing a high level of social isolation resulting in issues of identity crisis and / or personal crisis.

The Department of Education guidance [The Prevent Duty](#) can be accessed via this link.

21 Domestic Abuse

Domestic abuse represents one quarter of all violent crime. It is actual or threatened physical, emotional, psychological or sexual abuse. It involves the use of power and control by one person over another. It occurs regardless of race, ethnicity, gender, class, sexuality, age, religion, mental or physical ability. Domestic abuse can also involve other types of abuse.

The Domestic Abuse Act 2021 received Royal Assent on 29 April 2021. The Act introduces the first ever statutory definition of domestic abuse and recognises the impact of domestic abuse on children, as victims in their own right, if they see, hear or experience the effects of abuse. The statutory definition of domestic abuse, based on the previous cross-government

definition, ensures that different types of relationships are captured, including ex-partners and family members. The definition captures a range of different abusive behaviours, including physical, emotional and economic abuse and coercive and controlling behaviour. Both the person who is carrying out the behaviour and the person to whom the behaviour is directed towards must be aged 16 or over and they must be “personally connected” (as defined in section 2 of the 2021 Act).

We use the term domestic abuse to reflect that a number of abusive and controlling behaviours are involved beyond violence. Slapping, punching, kicking, bruising, rape, ridicule, constant criticism, threats, manipulation, sleep deprivation, social isolation, and other controlling behaviours all count as abuse.

Living in a home where domestic abuse takes place is harmful to children and can have a serious impact on their behaviour, wellbeing and understanding of healthy, positive relationships. Children who witness domestic abuse are at risk of significant harm and staff are alert to the signs and symptoms of a child suffering or witnessing domestic abuse.

The school is enrolled onto the Operation Encompass scheme, a joint project between Surrey Police, Surrey Domestic Abuse Service and Surrey Schools; where every school day morning our DSL is notified of all domestic abuse incidents that have occurred and been reported to Police in the previous 24 hours which involved a child at this school (72 hours on a Monday morning). This provides an opportunity for us to ensure the right support is in place at the right time for children who are experiencing domestic abuse.

22 Child Sexual Exploitation (CSE)

Child sexual exploitation is a form of child sexual abuse.

It occurs where an individual or group takes advantage of an imbalance of power to coerce, manipulate or deceive a child or young person under the age of 18 into sexual activity (a) in exchange for something the victim needs or wants, and/or (b) for the financial advantage or increased status of the perpetrator or facilitator.

The victim may have been sexually exploited even if the sexual activity appears consensual.

Child sexual exploitation does not always involve physical contact; it can also occur through the use of technology. All staff are aware of the link between online safety and vulnerability to CSE.

Any concerns that a child is being or is at risk of being sexually exploited should be passed immediately to the DSL.

The school is aware there is a clear link between regular non-attendance at school and CSE. Staff will consider a child to be at potential CSE risk in the case of regular non-attendance at school and make reasonable enquiries with the child and parents to assess this risk.

All staff are aware that safeguarding incidents and/or behaviours can be associated with factors outside the school or college and/or can occur between children outside of these environments. All staff, but especially the designated safeguarding lead (and deputies) will consider whether children are at risk of abuse or exploitation in situations outside their families. Extra-familial harms take a variety of different forms and children can be vulnerable to multiple harms including (but not limited to) sexual exploitation, criminal exploitation, and serious youth violence

The DSL will consider the published Surrey Safeguarding Children Partnership guidance and advice when there is a concern that a child is being or is at risk of

being sexually exploited or where indicators have been observed that are consistent with a child who is being or who is at risk of being sexually exploited.

In all cases, if the DSL identifies any level of concern the DSL should contact the C-SPA and email a Request for Support Form. If a child is in immediate danger the police should be called on 999.

The school is aware that often a child is not able to recognise the coercive nature of the abuse and does not see themselves as a victim. As a consequence the child may resent what they perceive as interference by staff. However, staff must act on their concerns as they would for any other type of abuse. Children also rarely self-report CSE so staff must be particularly vigilant to potential indicators of risk.

The school includes the risks of sexual exploitation in the PSHE and SRE curriculum. Pupils will be informed of the grooming process and how to protect themselves from people who may potentially be intent on causing harm. They will be supported in terms of recognising and assessing risk in relation to CSE, including online, and knowing how and where to get help.

22.1 Child Criminal Exploitation, Child Slavery & Gangs

CSE and CCE are forms of abuse and both occur where an individual or group takes advantage of an imbalance in power to coerce, manipulate or deceive a child into sexual or criminal activity. Child slavery is also a form of abuse where an individual or group takes advantage of an imbalance in power to coerce, manipulate or deceive a child into inappropriate activity. Please refer to the trust-wide Modern Slavery Statement on how we try to combat this.

There are a number of areas in which young people are put at risk by coercion or gang activity, both through participation in, and as victims of, gang violence which can be in relation to their peers or to a gang-involved adult in their household.

A child who is affected by coercion, gang activity or serious youth violence may have suffered, or may be likely to suffer, significant harm through physical, sexual and emotional abuse or neglect.

Teenagers can be particularly vulnerable to recruitment into gangs and involvement in gang violence. This vulnerability may be exacerbated by risk factors in an individual's background, including violence in the family, involvement of siblings in gangs, poor educational attainment, or poverty or mental health problems.

Criminal exploitation of children is a typical feature of county lines criminal activity. Key identifying features of involvement in county lines are when children are missing, when the victim may have been trafficked for transporting drugs, a referral to the National Referral Mechanism should be considered with Social Care and Police colleagues. County lines is a term used to describe gangs and organised criminal networks involved in exporting illegal drugs (primarily crack cocaine and heroin) into one or more importing areas [within the UK], using dedicated mobile phone lines or other form of "deal line".

A child who is affected by gang activity, criminal exploitation or serious youth violence can be at risk of significant harm through physical, sexual and emotional abuse. Girls may be particularly at risk of sexual exploitation.

Any concerns that a child is being or is at risk of being the subject of child slavery or criminal exploitation will be passed without delay to the DSL. The school is aware there is a clear link between regular non-attendance at school and exploitation. Staff will consider a child to be at potential risk in the case of regular non-attendance at school and make reasonable enquiries with the child and parents to assess this risk.

A request for support to the C-SPA will be made when any concern of harm to a child as a consequence of gang activity including child criminal exploitation becomes known. Any member of staff who has concerns that a child may be at risk of harm should immediately inform the DSL. The DSL will contact the C-SPA. If there is concern about a child's immediate safety, the Police will be contacted on 999.

23 Youth produced sexual imagery (sexting)

The practice of children sharing images and videos via text message, email, social media or mobile messaging apps has become commonplace. However, this online technology has also given children the opportunity to produce and distribute sexual imagery in the form of photos and videos. Such imagery involving anyone under the age of 18 is unlawful.

Youth produced sexual imagery refers to both images and videos where:

- A person under the age of 18 creates and shares sexual imagery of themselves with a peer under the age of 18.
- A person under the age of 18 shares sexual imagery created by another person under the age of 18 with a peer under the age of 18 or an adult.
- A person under the age of 18 is in possession of sexual imagery created by another person under the age of 18.

All incidents of this nature should be treated as a safeguarding concern and in line with the UKCCIS guidance [‘Sexting in schools and colleges: responding to incidents and safeguarding young people’](#) and [‘Sharing nudes and semi-nudes: advice for education settings working with children and young people’](#)

Cases where sexual imagery of people under 18 has been shared by adults and where sexual imagery of a person of any age has been shared by an adult to a child is child sexual abuse and should be responded to.

If a member of staff becomes aware of an incident involving youth produced sexual imagery they should follow the child protection procedures and refer to the DSL immediately.

The member of staff should confiscate the device involved and set it to flight mode or, if this is not possible, turn it off. Staff must not view, copy or print the youth produced sexual imagery.

The DSL should hold an initial review meeting with appropriate school staff and subsequent interviews with the children involved (if appropriate).

Parents should be informed at an early stage and involved in the process unless there is reason to believe that involving parents would put the child at risk of harm.

At any point in the process if there is concern a child has been harmed or is at risk of harm a request for support should be made to the C-SPA or the Police as appropriate.

Immediate request for support at the initial review stage should be made to Children's Social Care/Police if:

- The incident involves an adult.
 - There is good reason to believe that a young person has been coerced, blackmailed or groomed or if there are concerns about their capacity to consent (for example, owing to special education needs).
 - What you know about the imagery suggests the content depicts sexual acts which are unusual for the child's development stage or are violent.
 - The imagery involves sexual acts.
-
- The imagery involves anyone aged 12 or under.
 - There is reason to believe a child is at immediate risk of harm owing to the sharing of the imagery, for example the child is presenting as suicidal or self-harming.

If none of the above apply then the DSL will use their professional judgement to assess the risk to pupils involved and may decide, with input from the Principal, to respond to the incident without referral to the C-SPA or the Police.

During the decision making the DSL will consider if:

- There is a significant age difference between the sender/receiver.
- There is any coercion or encouragement beyond the sender/receiver.
- The imagery was shared and received with the knowledge of the child in the imagery.
- The child is vulnerable, for example subject to Child in Need, Child Protection or Early Help plans, Looked After, SEND.
- There is a significant impact on the children involved.
- The image is of a severe or extreme nature.
- The child involved understands consent.
- The situation is isolated or if the image been more widely distributed.
- There other circumstances relating to either the sender or recipient that may add cause for concern.
- The children have been involved in incidents relating to youth produced sexual imagery previously.

If any of these circumstances are present the situation will be referred according to our child protection procedures, including referral to the C-SPA or the Police.

The DSL will record all incidents of youth produced sexual imagery, including the actions taken, rationale for actions and the outcome.

24 Female Genital Mutilation (FGM)

Female Genital Mutilation (FGM) is illegal in England and Wales under the FGM Act (2003). It is a form of child abuse and violence against women. [A mandatory reporting duty requires teachers to report 'known' cases of FGM in under 18s](#), which are identified in the course of their professional work, to the police.

The duty applies to all persons in school who are employed or engaged to carry out 'teaching work' in the school, whether or not they have qualified teacher status.

The duty applies to the individual who becomes aware of the case to make a report. It should not be transferred to the Designated Safeguarding Lead, however the DSL should be informed.

If a teacher is informed by a girl under 18 that an act of FGM has been carried out on her or a teacher observes physical signs which appear to show that an act of FGM has been carried out on a girl under 18 and they have no reason to believe the act was necessary for the girl's physical or mental health or for purposes connected with labour or birth, the teacher should personally make a report to the police force in which the girl resides by calling 101. The report should be made immediately.

School staff are trained to be aware of risk indicators of FGM.

Concerns about FGM outside of the mandatory reporting duty should be reported using the school's child protection procedures. Staff should be particularly alert to suspicions or concerns expressed by female pupils about going on a long holiday during the summer holiday.

There should also be consideration of potential risk to other girls in the family and the wider community. Where there is a risk to life or likelihood of serious immediate harm the teacher should report the case immediately to the police, including dialling 999 if appropriate.

There are no circumstances in which a teacher or other member of staff should examine a girl.

25 Forced Marriage

A forced marriage is a marriage in which one or both people do not (or in cases of people with learning disabilities cannot) consent to the marriage but are coerced into it. Coercion may include physical, psychological, financial, sexual and emotional pressure. It may also involve physical or sexual violence and abuse.

Forced marriage is recognised in the UK as a form of violence against women and men, domestic/child abuse and a serious abuse of human rights. Since June 2014 forcing someone to marry has become a criminal offence in England and Wales under the Anti-Social Behaviour, Crime and Policing Act 2014.

A forced marriage is not the same as an arranged marriage which is common in many cultures. The families of both spouses take a leading role in arranging the marriage but the choice of whether or not to accept the arrangement remains with the prospective spouses.

School staff should never attempt to intervene directly as a school or through a third party. Contact should be made with the C-SPA and/or the Forced Marriage Unit 200 7008 0151.

26 Honour-based Abuse

Honour based abuse (HBA) can be described as a collection of practices, which are used to control behaviour within families or other social groups to protect perceived cultural and religious beliefs and/or honour. Such violence can occur when perpetrators perceive that a relative has shamed the family and/or community by breaking their honour code.

Honour based abuse might be committed against people who:

- become involved with a boyfriend or girlfriend from a different culture or religion;
- want to get out of an arranged marriage; become involved with a boyfriend or girlfriend from a different culture or religion;
- want to get out of an arranged marriage;
- want to get out of a forced marriage

- wear clothes or take part in activities that might not be considered traditional within a particular culture
- It is considered a violation of human rights and may be a form of domestic and/or sexual abuse

27 One Chance Rule

All staff are aware of the 'One Chance' Rule' in relation to forced marriage, FGM and HBA. Staff recognise they may only have 'one chance' to speak to a child who is a potential victim and have just one chance to save a life.

The school is aware that if the victim is not offered support following disclosure that the 'One Chance' opportunity may be lost. Therefore, all staff are aware of their responsibilities and obligations when they become aware of potential forced marriage, FGM and HBA cases.

28 Private Fostering Arrangements

A [private fostering](#) arrangement occurs when someone other than a parent or close relative cares for a child for a period of 28 days or more, with the agreement of the child's parents. It applies to children under the age of 16 years old or 18 years old if the child is disabled.

Children looked after by the local authority or who are placed in residential schools, children's homes or hospitals are not considered to be privately fostered.

Private fostering occurs in all cultures and children may be privately fostered at any age.

The school recognises that most privately fostered children remain safe and well but are aware that safeguarding concerns have been raised in some cases. Therefore, all staff are alert to possible safeguarding issues, including the possibility that the child has been trafficked into the country.

By law, a parent, private foster carer or other persons involved in making a private fostering arrangement must notify Children's Social Care immediately. However, where a member of staff becomes aware that a pupil may be in a private fostering arrangement, they will raise this with the DSL and the DSL will notify the C-SPA immediately.

29 Children Looked After

The most common reason for children becoming looked after is as a result of abuse and neglect.

The school ensures that staff have the necessary skills and understanding to keep looked after children safe. Appropriate staff have information about a child's looked after legal status and care arrangements, including the level of authority delegated to the carer by the authority looking after the child and contact arrangements with birth parents or those with parental responsibility.

The designated teacher and governor for children looked after will have the appropriate level training to equip them with the knowledge and skills to undertake their role.

The designated teacher for children looked after and the DSL have details of the child's social worker and the name and contact details of the Surrey County Council's Head of Virtual School.

The designated teacher for children looked after and children previously looked after will work in partnership with the Virtual School Assistant Headteacher to discuss how Pupil Premium Plus funding can be best used to support the progress of children looked after in the school and meet the needs of the child within their personal education plan.

30 Children Missing Education

All children, regardless of their circumstances, are entitled to an efficient, full time education which is suitable to their age, ability, aptitude and any special educational needs they may have.

The school recognises that children missing education, can be a vital warning sign of a range of safeguarding possibilities. They are also at significant risk of underachieving, being victims of abuse and harm, exploitation or radicalisation, and becoming NEET (not in education, employment or training) later in life.

Where possible the school will hold more than one emergency contact number for each pupil.

The school will ensure that there is a record of joiners and leavers as defined in [The Education \(Pupil Registration\) \(England\) 2006](#).

When removing a child's name, the school will notify the Local Authority of: (a) the full name of the child, (b) the full name and address of any parent with whom the child normally resides, (c) at least one telephone number of the parent, (d) the child's future address and destination school, if applicable, and (e) the ground in regulation 8 under which the child's name is to be removed from the school register.

The school will make reasonable enquiries to establish the whereabouts of a child jointly with the Local Authority, before deleting the child's name from the school register if the deletion is under regulation 8(1), sub-paragraphs (f) (iii) and (h) (iii) of [The Education \(Pupil Registration\) \(England\) 2006](#).

The school will:

- Enter pupils on the admissions register on the first day on which the school has agreed, or has been notified, that the pupil will attend the school.
- Notify the Local Authority within five days of adding a child's name to the admission register. The notification must include all the details contained in the admission register for the new pupil.
- Monitor each child's attendance through their daily register and follow the SCC procedure in cases of unauthorised absence.
- Remove a child's name from the admissions register on the date that the child leaves the school.
- The school will notify the Local Authority when they are about to remove a child's name from the school register under any of the fifteen grounds listed in the regulations, no later than the date that the child's name is due to be removed.
- Where parents notify the school, in writing, of their intention to electively home educate the school will forward a copy of the letter to the Education Inclusion Team. Where parents orally indicate that they intend to withdraw their child to be home educated and no letter has been received, the school will not remove the child from roll and will notify the Education Inclusion Team at the earliest opportunity.

31 Pupils Missing Out on Education

The vast majority of children engage positively with school and attend regularly. However, in order to flourish, some children require an alternative education offer or may require a modified timetable to support a return to full time education provision. It is recognised that children accessing alternative provision or a reduced or modified timetable may have additional vulnerabilities. Ofsted refer to these as Pupils Missing Out On Education (PMOOE), because they are not accessing their education in school in the 'usual way'.

The school will gain consent (if required in statute) from parents to put in place alternative provision and/or a reduced or modified timetable

The school will ensure that and parents (and the local authority where the pupil has an EHCP) are given clear information about alternative provision placements and reduced or modified timetables: why, when, where, and how they will be reviewed;

The school will keep the placement and timetable under review and involve parents in the review. Reviews will be frequent enough to provide assurance that the off-site education and/or modified timetable is achieving its objectives and that the pupil is benefitting from it;

The school will monitor and track children attending alternative provision to ensure that the provision meets the needs of the child

The school will comply with regular data returns requested by the Local Authority, regarding all pupils, of statutory school age, attending alternative provision and/or on a reduced or modified timetable.

The school leadership will report to governors of any formal direction of a pupil to alternative provision to improve behaviour.

The school leadership will report to governors information regarding the use and effectiveness of the use of alternative provision and modified timetables.

32 School Attendance and Behaviour

Additional policies and procedures are in place regarding school attendance and behaviour.

The school recognises that absence from school and exclusion from school may be indicators of abuse and neglect, including the exploitation of children. The DSL will regularly liaise with members of school staff with responsibility for behaviour and attendance to ensure risk is identified and appropriate intervention is in place to protect children from harm.

The school will work in partnership with Surrey Police and other partners for reporting children that go missing from the school site during the school day. Staff will be alert to signs of children at risk of travelling to conflict zones, female genital mutilation and forced marriage.

33 Restrictive Physical Intervention

We acknowledge that staff must only ever use physical intervention as a last resort, when a child is at immediate risk of harming him/herself or others, and that at all times it must be the minimal force necessary to prevent injury to another person. Such events should be fully recorded and signed by a witness.

Staff who are likely to need to use physical intervention will be appropriately trained in Crisis Prevention Institute (CPI) techniques.

Staff understand that physical intervention of a nature which causes injury or distress to a child may be considered under child protection and/or disciplinary procedures.

We recognise that touch is appropriate in the context of working with children, and all staff have been given 'Safe Practice' guidance to ensure they are clear about their professional boundaries.

When applying disciplinary measures such as physical intervention or isolation for children with SEND the school will consider the risks, given the additional vulnerabilities of these children.

Surrey County Council guidance [Touch and the use of restrictive Physical Intervention When Working with Children and Young People](#) provides further detailed information.

34 Whistle-blowing

We recognise that children cannot be expected to raise concerns in an environment where staff fail to do so.

All staff should be aware of their duty to raise concerns, where they exist, about the management of child protection, which may include the attitude or actions of colleagues, poor or unsafe practice and potential failures in the school's safeguarding arrangements. If it becomes necessary to consult outside the school, they should:

- a) speak in the first instance, to the Area Schools Officer or LADO in accordance with the Whistleblowing Policy.
- b) staff are encouraged to use an external, independent and confidential service provided by Navex Global, who can be contacted on their freephone helpline number 0800 069 8180 and through the Navex Global web pages

The NSPCC whistleblowing helpline is available for staff who do not feel able to raise concerns regarding child protection failures internally or have concerns about a way a concern is being handled by their school. Staff can call: 0800 028 0285 – line is available from 8:00 AM to 8:00 PM, Monday to Friday and Email: help@nspcc.org.uk.

Please refer to the trust Whistle-blowing policy for further information

35 Response to COVID-19

The way the school has had to operate in response to coronavirus continues to be different to business as usual. However, as pupil attendance continues to be impacted, a number of important safeguarding principles remain the same:

- the best interests of children must always continue to come first
- if anyone in a school or college has a safeguarding concern about any child they should continue to act and act immediately
- a DSL or deputy will be available
- unsuitable people are not allowed to enter the children's workforce and/or gain access to children
- children will continue to be protected when they are online

As far as is reasonably possible, we will take a whole institution approach to safeguarding. This will allow us to satisfy ourselves that any new policies and processes in response to COVID-19 are not weakening our approach to safeguarding or undermining our child protection policy.

The school will continue to work with and support children's social workers to help protect vulnerable children. This includes working with and supporting children's social workers and the local authority virtual school head (VSH) for looked-after and previously looked-after children. The lead person for this is identified in the contacts page at the front of this policy.

35.1 Designated Safeguarding Lead

A member of the DSL team will always be available during school hours. The optimal scenario is to have a trained DSL (or deputy) available on site. Where this is not the case a trained DSL (or deputy) will be available to be contacted via phone or online video - for example when working from home.

Where a trained DSL (or deputy) is not on site, in addition to the above, a designated senior member of staff will assume responsibility for co-ordinating safeguarding on site.

This might include liaising with the offsite DSL (or deputy) and as required liaising with children's social workers where they require access to children in need and/or to carry out statutory assessments at the school. It is important that all our staff and volunteers have access to a trained DSL (or deputy). On each day staff on site will be made aware of that person is and how to speak to them.

The DSL will continue to engage with social workers, and attend all multi-agency meetings, which can be done remotely.

35.2 Children and online safety away from school

It is important that all staff who interact with children, including online, continue to look out for signs a child may be at risk. Any such concerns should be dealt with as per the Child Protection Policy and where appropriate referrals should still be made to children's social care and as required, the police.

The school will ensure any use of online learning tools and systems is in line with privacy and data protection/GDPR requirements.

Below are some things to consider when delivering virtual lessons, especially where webcams are involved:

- Staff and children must wear suitable clothing, as should anyone else in the household.
- Any computers used should be in appropriate areas, for example, not in bedrooms; and the background should be blurred.
- The live class should be recorded so that if any issues were to arise, the video can be reviewed.
- Live classes should be kept to a reasonable length of time, or the streaming may prevent the family 'getting on' with their day.
- Language must be professional and appropriate, including any family members in the background.
- Staff must only use platforms provided by the school to communicate with pupils
- Staff should record, the length, time, date and attendance of any sessions held.

35.3 Supporting children not in school

The school is committed to ensuring the safety and well-being of all its Children.

Where the DSL has identified a child to be on the edge of social care support, or who would normally receive pastoral-type support in school, they should ensure that a robust communication plan is in place for that child or young person.

The communication plans can include remote contact, phone contact, door-step visits. Other individualised contact methods should be considered and recorded.

The school and its DSL will work closely with all stakeholders to maximise the effectiveness of any communication plan.

This plan must be reviewed regularly (at least once a fortnight) and where concerns arise, the DSL will consider any referrals as appropriate.

35.4 Attendance

It is vital for all children to return to school to minimise as far as possible the longer-term impact of the pandemic on children's education, wellbeing and wider development.

School attendance is mandatory from the beginning of the autumn term. This means that the usual rules on school attendance will apply, including:

- parents' duty to secure that their child attends regularly at school where the child is a registered pupil at school and they are of compulsory school age;
- the schools' responsibilities to record attendance and follow up absence
- the availability to issue sanctions, including fixed penalty notices in line with local authorities' codes of conduct